



Te Pae

Christchurch
Convention Centre



Nau mai, haere mai ki
Te Pae ki Ōtautahi

Welcome to Te Pae Christchurch
Convention Centre

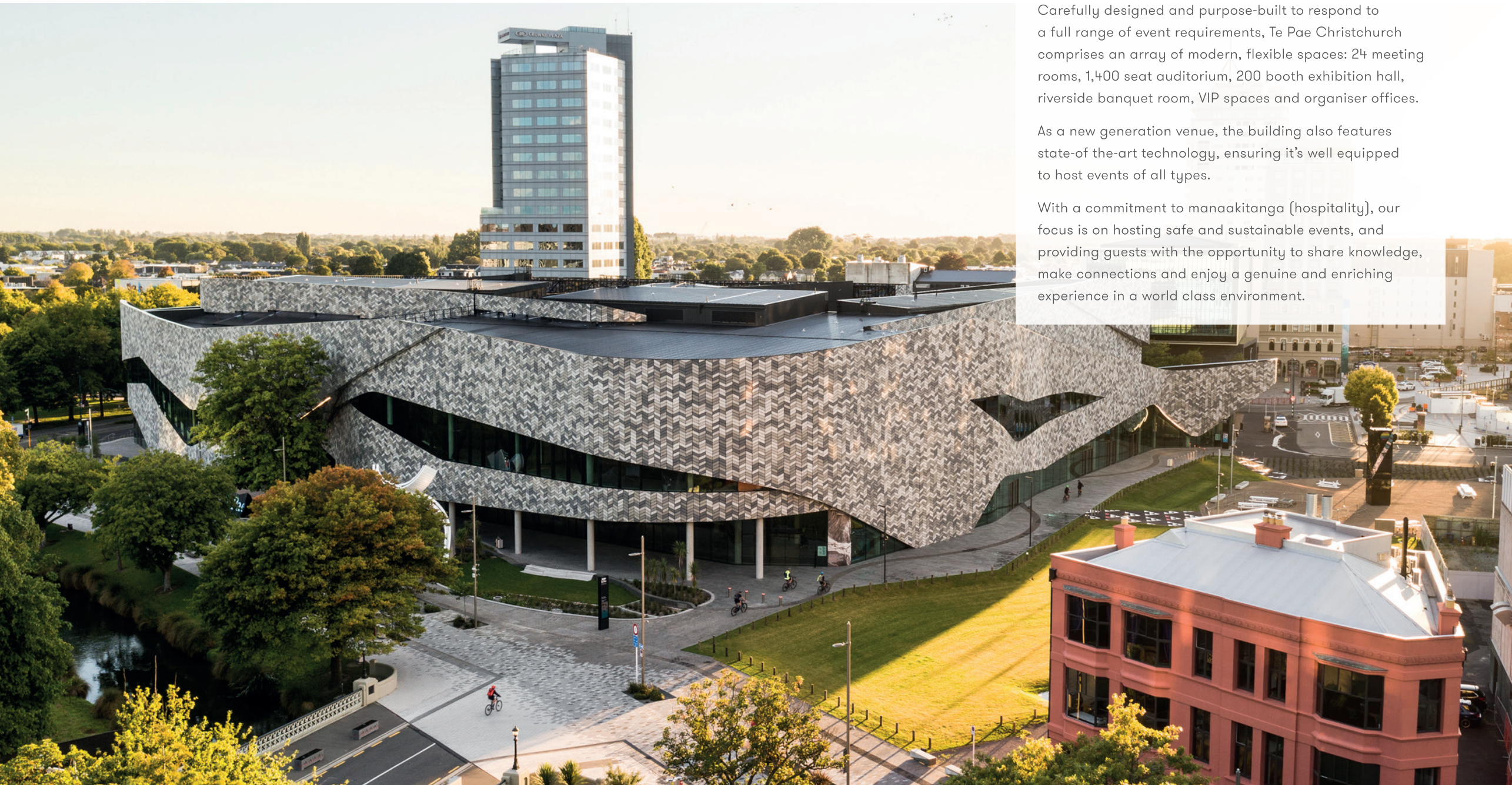
Te Pae Christchurch Convention Centre is the first of New Zealand's new generation convention centres, an international standard venue that showcases the very best of New Zealand.

Located in the thriving centre of the South Island's largest city – close to Christchurch International Airport – the Centre is ideally positioned to allow guests and delegates to enjoy a unique and authentic experience of the city and the wider region.

Carefully designed and purpose-built to respond to a full range of event requirements, Te Pae Christchurch comprises an array of modern, flexible spaces: 24 meeting rooms, 1,400 seat auditorium, 200 booth exhibition hall, riverside banquet room, VIP spaces and organiser offices.

As a new generation venue, the building also features state-of the-art technology, ensuring it's well equipped to host events of all types.

With a commitment to manaakitanga (hospitality), our focus is on hosting safe and sustainable events, and providing guests with the opportunity to share knowledge, make connections and enjoy a genuine and enriching experience in a world class environment.



CHRISTCHURCH, NEW ZEALAND

A vibrant, modern and future-focused city in the heart of the South Island

New Zealand's second largest city, Ōtautahi Christchurch, is an ideal location for event organisers looking for a world-class experience.

The city has undergone large-scale change in the last decade, creating New Zealand's newest city, filled with modern infrastructure, stunning landscapes and fascinating culture.

Business events are well catered for in Christchurch, as are attending delegates staying in the main urban hub of the South Island, with all the resources needed to plan and execute a world-class event close at hand.

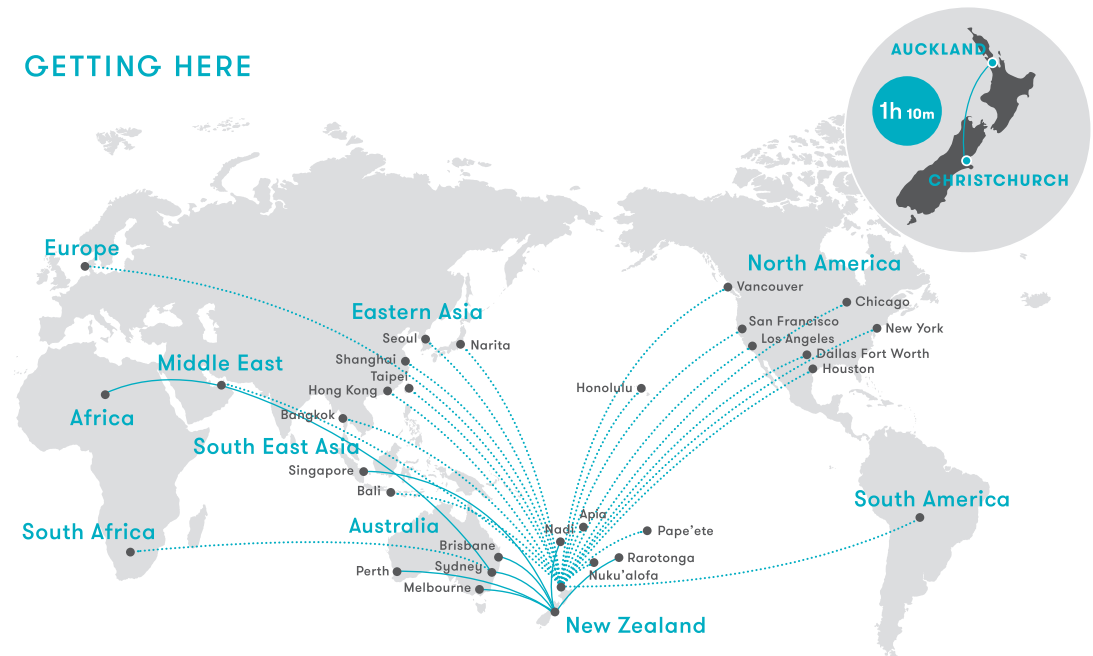
At the city's core is Te Pae Christchurch Convention Centre. An architectural and social landmark, it has been designed as the welcoming heart of Christchurch — just 20 minutes' drive from Christchurch International Airport — with its connections to major centres throughout Asia Pacific and the Americas.

Situated within a safe, compact and walkable inner-city, Te Pae Christchurch is within walking distance of more than 2,500 hotel rooms, and some of the city's best restaurants, bars, shopping and entertainment venues.

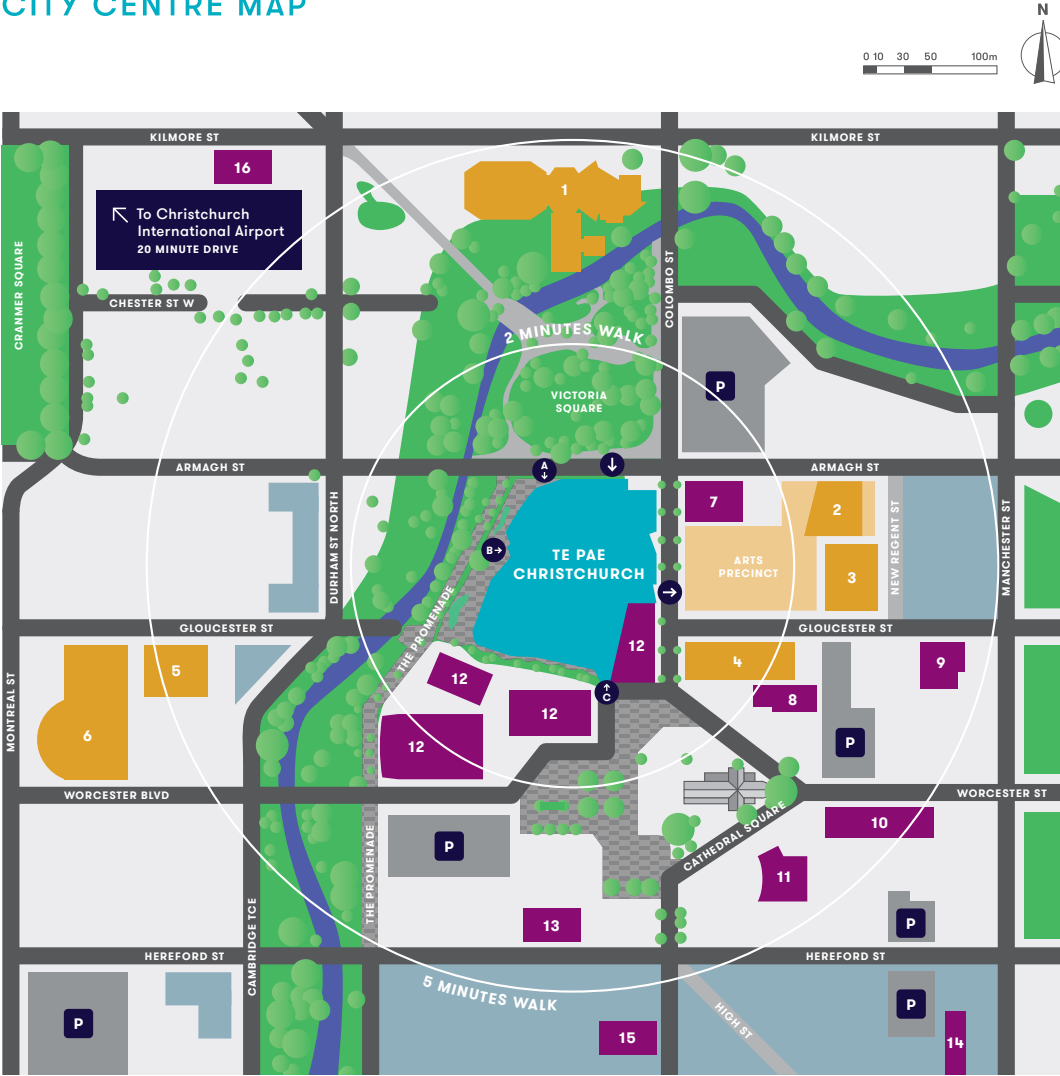
With easy access to a multitude of cultural, foodie and outdoor activities, Christchurch is also known as the gateway to New Zealand's stunning South Island, making it the perfect jumping off point for delegates wanting to explore stunning landscapes, or enjoy a thrill-seeking few days before heading home.



GETTING HERE



CITY CENTRE MAP



KEY

- A ↓ Armagh St Entrance
- B → Oxford Terrace Main Entrance
- C ↑ Cathedral Square Entrance
- ↓ Loading Entry
- Loading Exit
- P Parking
- Retail & Hospitality

ARTS & CULTURE

- 1 Christchurch Town Hall
- 2 The Piano
- 3 Isaac Theatre Royal
- 4 Tūranga - Central Library
- 5 Centre of Contemporary Art
- 6 Christchurch Art Gallery Te Puna a Waiwhentu

HOTELS

- 7 Crowne Plaza
- 8 Novotel
- 9 Fable Christchurch Hotel
- 10 Heritage Hotel
- 11 Distinction Hotel
- 12 Proposed Hotels
- 13 Ibis
- 14 BreakFree on Cashel
- 15 Christchurch City Hotel
- Wyndham Garden Christchurch City

VENUE KEY FEATURES

A world-class venue designed to respond to your every event requirement

1,400
tiered auditorium
divisible into 2×700 seats

2,800m²
exhibition space
expandable to 3,300m²

24
meeting rooms
for 20–2,000

960
seat banquet space
overlooking Ōtākaro Avon River

1,600
largest banquet seating

28,000m²
highly flexible and
adaptable design



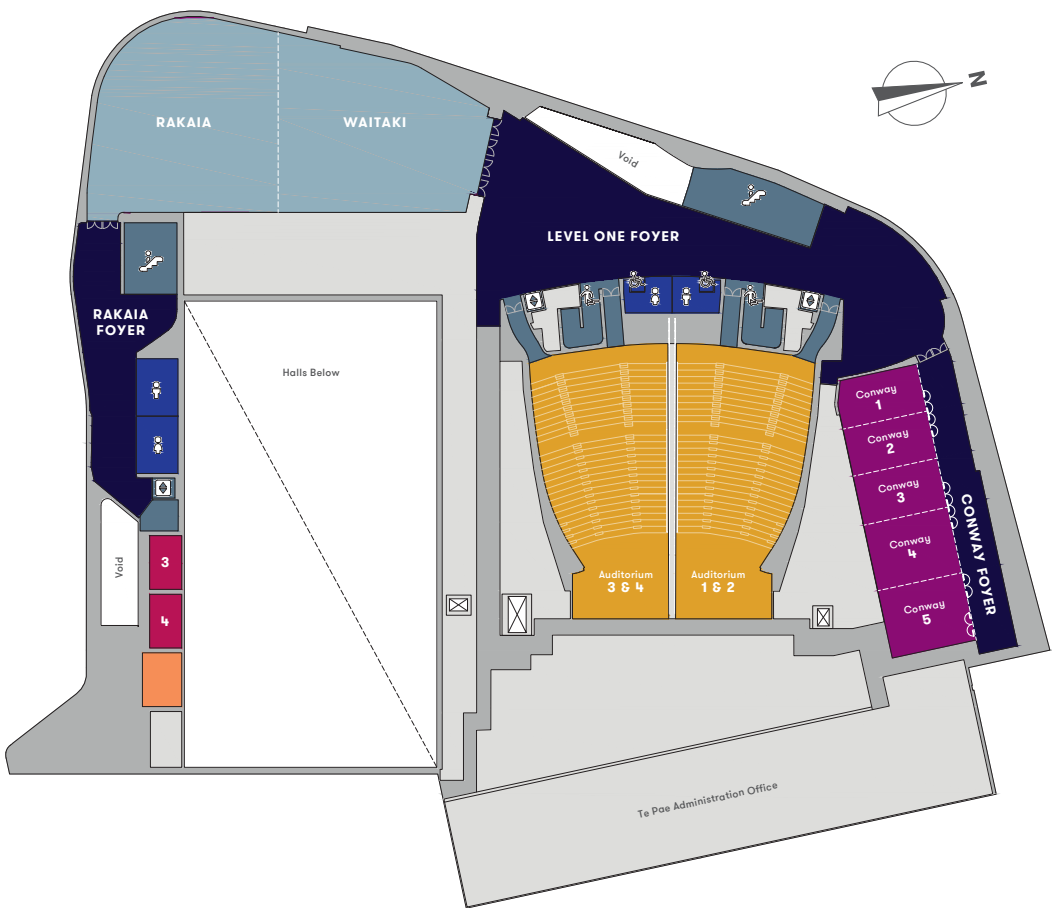
GROUND FLOOR



KEY

- Meeting Rooms
- Foyers
- Auditorium
- River Rooms
- Halls
- Speaker Prep and Organisers' Offices
- Boardroom, Hospitality Suite & Te Pae Lounge
- Circulation Front of House
- Back of House

LEVEL ONE



- Stairs
- Escalator
- Passenger Lift
- Back of House Lift
- Toilets
- Toilets - Accessible
- Parents Room
- Operable Walls

CAPACITY

	Level	Theatre	Classroom	Cabaret (8 Pax)	Banquet	Cocktail	Exhibition	Square metres	Square feet	Ceiling height (m)
Auditorium										
Full Auditorium 1-4	G & 1	1,400	-	-	-	-	-	1,372	14,768	variable
Auditorium 1 & 2	G & 1	700	-	-	-	-	-	686	7,384	variable
Auditorium 3 & 4	G & 1	700	-	-	-	-	-	686	7,384	variable

Halls

Halls 1-4 including Dobson 1-4	G	3,600	1,820	2,272	-	3,600	210	3,314	35,672	variable
Hall 1	G	490	442	400	440	490	46	719	7,739	10.1
Hall 2	G	490	442	384	440	490	45	706	7,599	10.1
Hall 3	G	740	702	616	720	740	68	1,060	11,410	10.1
Halls 1 & 2	G	980	850	840	900	980	95	1,426	15,350	10.1
Halls 2 & 3	G	1,230	1,100	976	1,100	1,230	116	1,766	19,009	10.1
Halls 3 & 4	G	1,010	880	800	1,050	1,010	94	1,420	15,285	10.1
Halls 1, 2 & 3	G	2,000	1,240	1,413	1,600	2,000	165	2,486	26,759	10.1
Halls 2, 3 & 4	G	1,500	1,216	1,240	-	1,500	141	2,126	22,884	10.1
Halls 1, 2, 3 & 4	G	3,200	1,820	1,648	-	3,200	191	2,845	30,623	10.1
Hall 1 and Dobson 1-4	G	990	582	656	790	990	71	1,187	12,777	variable
Halls 1 & 2 and Dobson 1-4	G	1,480	1,410	1,093	1,340	1,480	120	1,893	20,376	variable
Hall 1, 2 & 3 and Dobson 1-4	G	2,500	1,820	1,640	1,880	2,500	190	2,954	31,797	variable

Dobson Rooms

Dobson 1-4	G	500	255	256	290	500	24	468	5,038	5
Dobson 1	G	126	66	72	80	145	-	144	1,550	5
Dobson 2	G	70	36	48	50	90	-	90	969	5
Dobson 3	G	70	36	48	50	90	-	90	969	5
Dobson 4	G	126	66	72	80	145	-	144	1,550	5
Dobson 1 & 2	G	196	120	120	140	235	-	234	2,519	5
Dobson 2 & 3	G	168	84	96	100	180	-	180	1,938	5
Dobson 3 & 4	G	196	120	120	140	235	-	234	2,519	5
Dobson 1, 2 & 3	G	308	156	160	180	325	-	324	3,488	5
Dobson 2, 3 & 4	G	308	190	160	180	325	-	324	3,488	5
Dobson Foyer	G	-	-	-	-	1,100	-	1,000	10,764	-



Te Pae Exterior



Ground Floor Foyer



Level One Foyer

	Level	Theatre	Classroom	Cabaret (8 Pax)	Banquet	Cocktail	Exhibition	Square metres	Square feet	Ceiling height (m)
Bealey Rooms										
Bealey 1	G	36	18	24	30	50	–	70	753	5
Bealey 2	G	39	20	24	30	55	–	76	818	4.5
Bealey 3	G	70	30	32	50	80	–	94	1,012	4.5
Bealey 4	G	70	30	32	50	70	–	89	958	5.5
Bealey 5	G	77	36	32	60	90	–	100	1,076	5.5
Bealey 4 & 5	G	160	95	96	120	160	–	189	2,034	5.5
Bealey Foyer	G	–	–	–	–	300	–	232	2,497	–

Conway Rooms

Conway 1, 2, 3, 4 & 5 (including pre-function foyer)	1	864	495	464	500	900	48	854	9,192	5.275
Conway 1	1	77	36	32	50	80	–	96	1,033	5.275
Conway 2	1	80	42	32	50	80	–	99	1,066	5.275
Conway 3	1	88	42	40	60	90	–	103	1,109	5.275
Conway 4	1	130	63	56	80	130	–	137	1,475	5.275
Conway 5	1	140	63	64	80	140	–	140	1,507	5.275
Conway 1 & 2	1	160	105	96	120	160	–	196	2,110	5.275
Conway 2 & 3	1	170	98	96	120	170	–	202	2,174	5.275
Conway 3 & 4	1	208	112	120	150	220	–	243	2,368	5.275
Conway 4 & 5	1	256	126	136	180	270	–	280	3,014	5.275
Conway 1, 2 & 3	1	250	140	136	180	250	–	300	3,229	5.275
Conway 2, 3 & 4	1	300	154	168	210	300	–	343	3,692	5.275
Conway 3, 4 & 5	1	360	168	187	240	360	–	383	4,123	5.275
Conway 1, 2, 3 & 4	1	380	203	200	240	380		437	4,704	5.275
Conway Foyer	1	–	–	–	–	280	–	275	2,960	5.275

Rivers Room

The Rivers Room (combines Rakaia and Waitaki)	1	1,481	718	768	960*	1,500	87	1,545	16,630	5.895
Waitaki River Room	1	705	349	320	430	750	35	738	7,944	5.895
Rakaia River Room	1	750	393	384	430	750	41	804	8,654	5.895

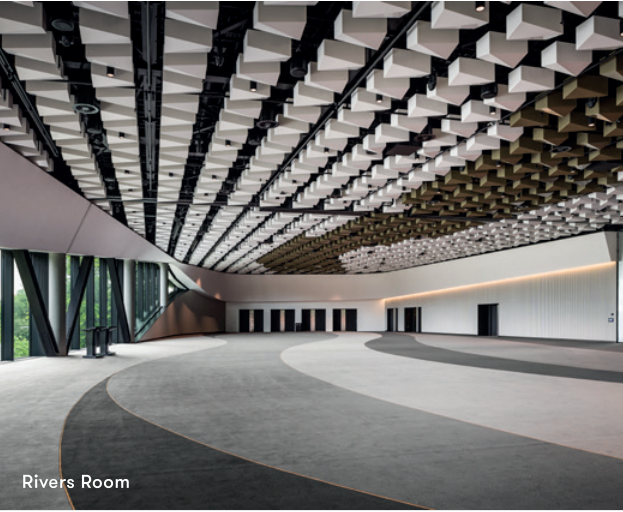
- » Additional auxiliary spaces are available for client offices, speaker presentation, hospitality, VIP and parents rooms.
- » Please note that these room capacities are also subject to event refinements.
- » Cabaret capacity is based on table of eight persons; cabaret setups allow space for AV setup per room.
- » Exhibition capacities are based on a standard 3m x 3m booth layout.
- * Capacity will vary depending on production elements, staging and dancefloor requirements.



Auditorium



Bealey Room

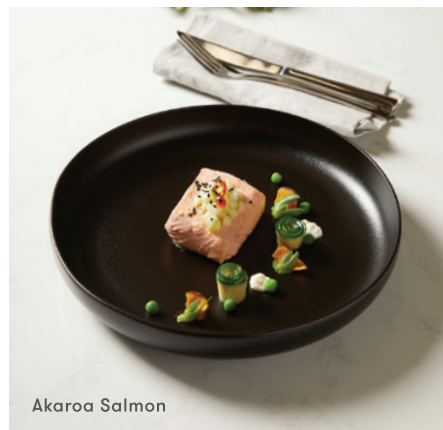


Rivers Room

At Te Pae Christchurch we are committed to hosting safe and sustainable events, which showcase the very best of our region



Te Mana Lamb Rump



Akaroa Salmon



Sustainability

Te Pae Christchurch is Toitū enviro mark gold certified and has received a Gold Sustainable Tourism Business Award from Qualmark in recognition of our commitment to sustainable operations.

Health and Safety

We are committed to providing a safe environment for guests across all aspects of the Centre including dedicated onsite health and safety and security teams, robust work safety processes and procedures, and world-leading hygiene and sanitisation standards.

New Generation Technology

Featuring the latest integrated technical systems, the Centre is well equipped to host in-person, virtual or hybrid events.

Food and Beverage

Sitting at the heart of Canterbury, New Zealand's food bowl, Te Pae Christchurch is spoiled for choice when it comes to showcasing the vibrant and varied flavours of our country. We mix global expertise and world class standards with unique local experience to bring the very best in regional cuisine to your table.

Dedicated Venue Team

A passionate team – from culinary and event planning to security and AV production – delivering our clients a seamless and uniquely New Zealand experience.

Global Advantage, Local Expertise

Proudly managed by ASM Global, the world's leading venue management company, Te Pae Christchurch combines the knowledge and experience of ASM Global's worldwide team with local expertise and a commitment to providing world-class service.

Manaakitanga

New Zealanders place enormous value on our long tradition of being hosts: we call it manaakitanga (hospitality).

Manaakitanga is not just one of the kaupapa (principles) underpinning the Centre's cultural narrative, it also underpins our service standards, it informs the way we treat every person who comes into Te Pae Christchurch, and it is a pillar of our operations.

We want you to experience our special way of making people feel welcome, which is why planning an event at Te Pae Christchurch is about more than a visit – it is about designing a tailored experience. We will go out of our way to ensure guests can enjoy a fully immersive encounter with our city and its people. We want them to make the most of every moment of their trip and leave having gained a new and rich experience of not only their field of expertise, but our culture, heritage and environment.



*All services supplied by ASM Global.

info@tepae.co.nz | +64 3 266 1400

tepae.co.nz

Proudly managed by ASM Global